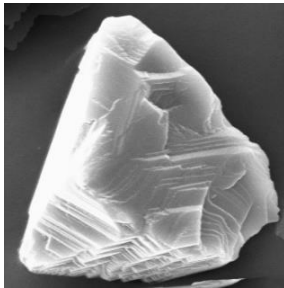


SYNDUST® CBN-B

CUBIC BORON NITRIDE MICRON POWDERS

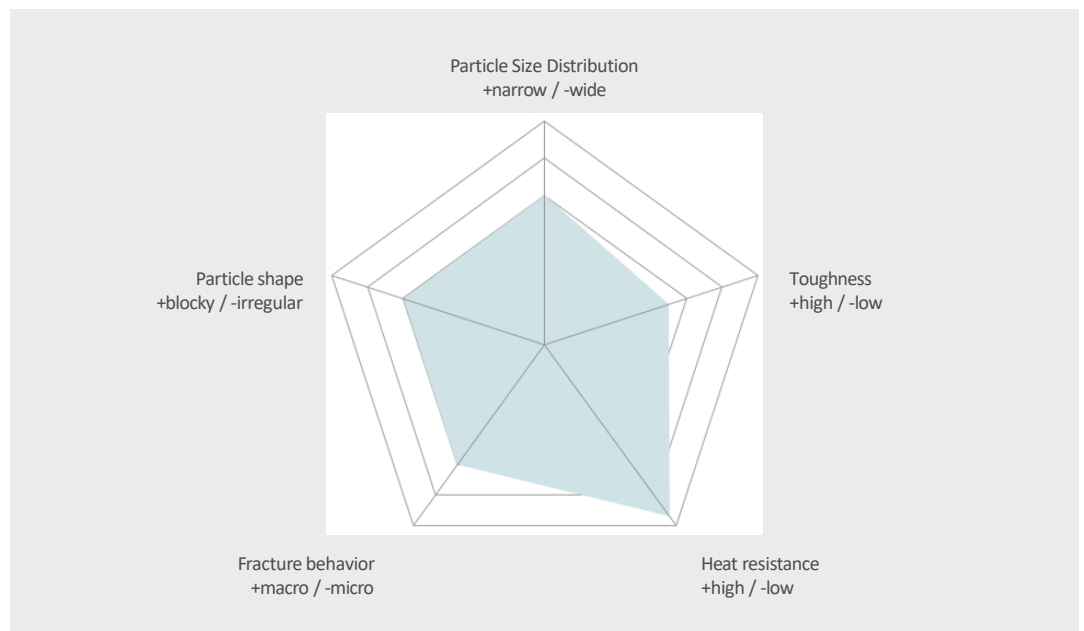


SYNDUST® CBN-B | SUPERIOR THERMAL STABILITY

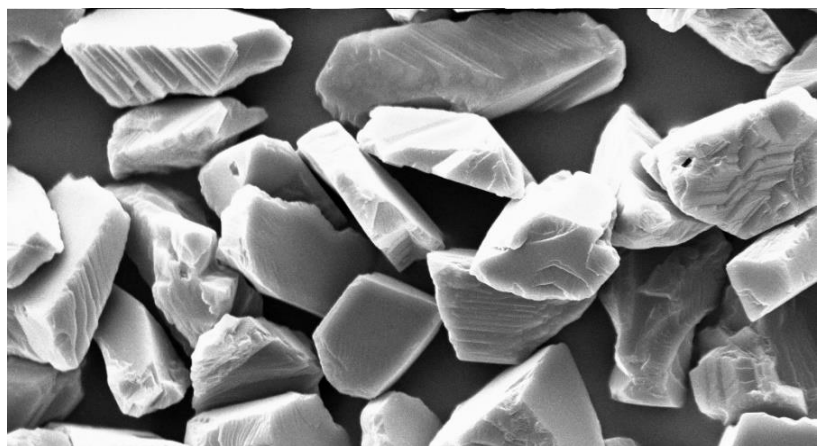
CBN-B is a medium-tough, black coloured CBN micron powder. It is made of thermally stable, black monocrystalline CBN with macro-fracture characteristics. Its angular particle shape and long cutting edges provide excellent performance on hard tool steels, alloyed steels and super-alloys, or in demanding lapping and polishing applications.

Van Moppes guarantees consistent quality by control of raw material, production process and unique inspection method.

PRODUCT CHARACTERIZATION



PROPERTIES	CBN-B (Ni60)
GRADING	normal
SYNTHESIS	HPHT
CRYSTAL STRUCTURE	monocrystalline
PARTICLE SHAPE	blocky to irregular
FRACTURING MODE	macro-fracture
SURFACE STRUCTURE	angular
IMPACT RESISTANCE	medium
PURITY	> 98.0%
BONDING SYSTEMS	MB, EP, VI (PH, PO)
DENSITY	3.48 g/cm ³



SYNDUST[®] CBN-B

CUBIC BORON NITRIDE MICRON POWDERS

D50 – MEDIANE SIZE	CBN-B	CBN-B 60Ni	MESH EQUIVALENT
46.0	CBN-B 40-50	CBN-B 60Ni 40-50	#500
36.0	CBN-B 30-40	CBN-B 60Ni 30-40	#600
29.0	CBN-B 22-36	CBN-B 60Ni 22-36	#700
24.0	CBN-B 20-30	CBN-B 60Ni 20-30	#800
19.0	CBN-B 15-25	CBN-B 60Ni 15-25	#1000
14.0	CBN-B 10-20	CBN-B 60Ni 10-20	#1200
12.0	CBN-B 8-16		#1400
8.00	CBN-B 6-12	CBN-B 60Ni 6-12	#1800
5.70	CBN-B 4-8		#3000
4.00	CBN-B 3-6		#6000
3.00	CBN-B 2-4		#8000

Extra Coatings and Sizes:

On request