

SYNDIA® SYM

MONOCRYSTALLINE MICRON DIAMOND POWDER

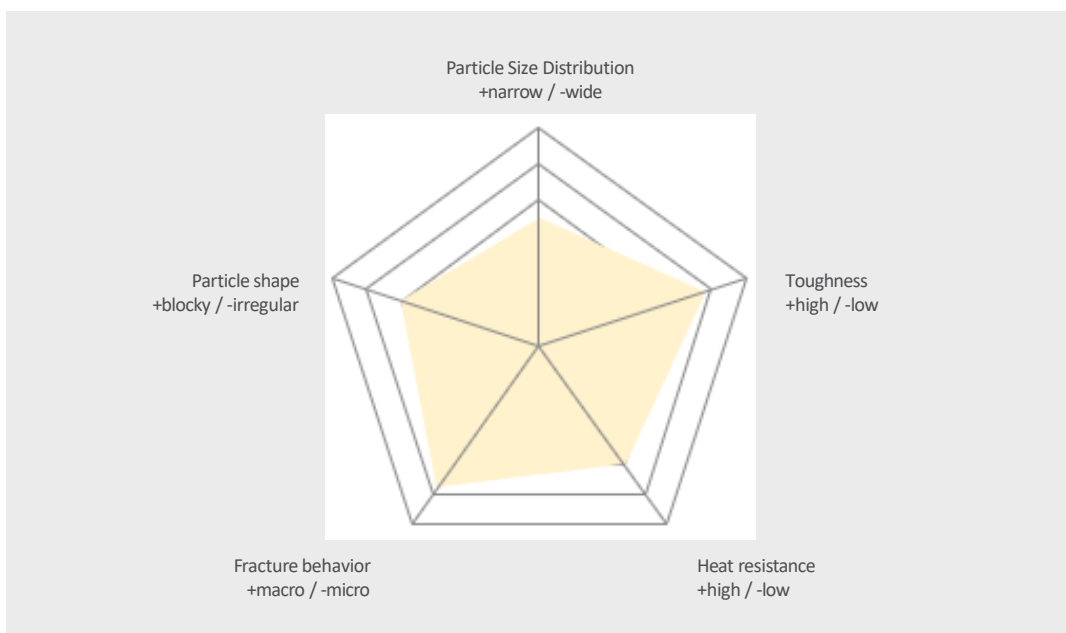


SYNDIA® SYM | ECONOMIC METAL BOND

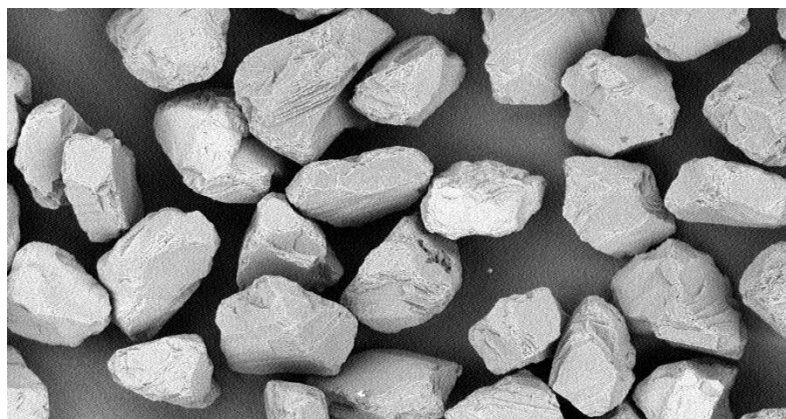
The SYM monocrystalline micron diamond powder range is produced from a specially selected metal bond type raw material. SYM is suitable for all standard polishing applications, the forming and polishing of diamond dies, as well as for vitrified and metal bonded wheels. SYM is a budget product for applications where cost considerations take priority.

Van Moppes guarantees consistent quality by control of raw material, production process and unique inspection method.

PRODUCT CHARACTERIZATION



PROPERTIES	SYM
GRADING	standard
SYNTHESIS	HPHT
CRYSTAL STRUCTURE	monocrystalline
PARTICLE SHAPE	blocky-irregular
FRACTURING MODE	macro-fracture
IMPACT RESISTANCE	high
PURITY	> 98.0%
BONDING SYSTEMS	VI, MB, EP
DENSITY	3.52 g/cm ³



SYNDIA® SYM

MONOCRYSTALLINE MICRON DIAMOND POWDER

MID-POINT	SYM	MESH EQUIVALENT	FEPA EQUIVALENT
92.5	SYM 70-120		
61.0	SYM 45-70		
53.0	SYM 40-60		MD63
46.0	SYM 40-50	#500	
41.0	SYM 35-45		
36.0	SYM 30-40	#600	MD40
32.5	SYM 30-40F		
29.0	SYM 22-36	#700	
24.0	SYM 20-30	#800	MD25
21.0	SYM 15-30	#1000	
19.0	SYM 15-25	#1000	
16.0	SYM 12-22	#1100	MD16
14.0	SYM 10-20	#1200	
12.0	SYM 8-16	#1400	
10.60	SYM 8-15		
9.50	SYM 8-12	#1500	MD10
8.00	SYM 6-12	#1800	
6.80	SYM 5-10	#2200	
5.70	SYM 4-8	#3000	MD6.3
4.80	SYM 4-6	#5000	
4.00	SYM 3-6	#6000	MD4.0
4.00	SYM 3-5		
3.00	SYM 2-4	#8000	
2.38	SYM 2-3		
2.00	SYM 1-3		
1.41	SYM 1-2		MD2.5
1.19	SYM 1-1.5		
1.00	SYM 0-2		
0.71	SYM 0.5-1		
0.50	SYM 0-1		
0.26	SYM 0-0.5		
0.18	SYM 0-0.25		

Also available :

SYM-56Ni - 56% nickel coating