

SYNDIA® ECO MICRON DIAMOND POWDERS

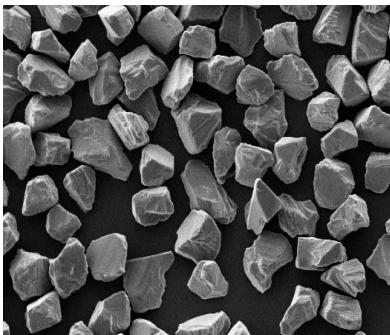
- Economy grades suitable for most standard applications
- Large size availability from stock for quick delivery
- Controlled grading quality for batch to batch consistency
- Quality guaranteed by Van Moppes ISO 9001 certification

ECO micron powders are budget products for applications where cost considerations take priority. In the coarser sizes, RBM is also available with metal coatings specially designed to improve particle retention in various tool or wheel bonding systems.

SYNDIA® SYM | METAL BOND

The SYM monocrystalline micron diamond powder range is produced from a specially selected metal bond type raw material. It is tough and contains blocky particles. SYM is suitable for all standard polishing applications, the forming and polishing of diamond dies, as well as for vitrified and metal bonded wheels.

SYM 30-40 200X



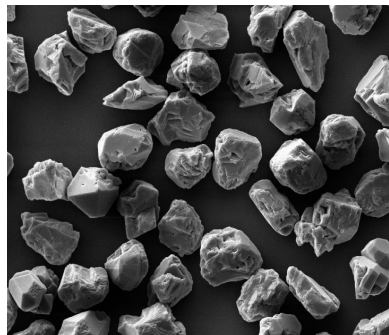
SYNDIA® RBM | RESIN BOND

Due to its crystalline properties and high crystal surface roughness, RBM is particularly suitable for all types of resin bonded wheels and tools. It is also recommended for lapping and polishing carbides, ceramics, plastic materials, natural stones and other hard materials.

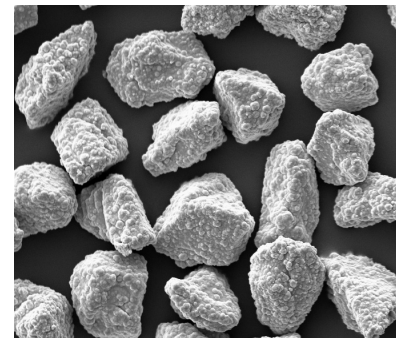
Also available:

- RBM-56Ni** - 56% nickel coating
- RBM-30Ni** - 30% nickel coating
- RBM-50Cu** - 50% copper coating

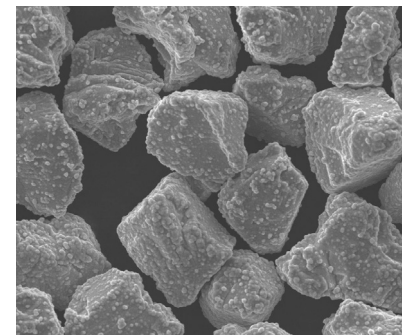
RBM 30-40 200X



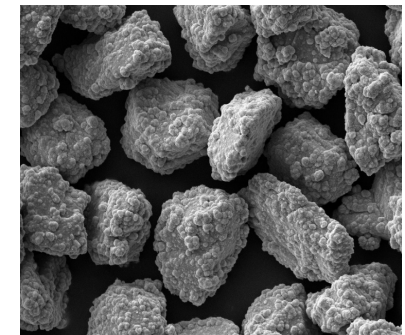
RBM-56Ni 30-40 300X



RBM-30Ni 30-40 300X



RBM-50Cu 30-40 300X





D50 MEDIAN	SYM	RBM	RBM-56Ni	RBM-30Ni	RBM-50Cu
53.00	SYM 40-60	RBM 40-60	RBM-56Ni 40-60	RBM-30Ni 40-60	RBM-50Cu 40-60
46.00	SYM 40-50	RBM 40-50	RBM-56Ni 40-50	RBM-30Ni 40-50	RBM-50Cu 40-50
36.00	SYM 30-40	RBM 30-40	RBM-56Ni 30-40	RBM-30Ni 30-40	RBM-50Cu 30-40
32.50	SYM 30-40F	RBM 30-40F	RBM-56Ni 30-40F	RBM-30Ni 30-40F	RBM-50Cu 30-40F
29.00	SYM 22-36	RBM 22-36	RBM-56Ni 22-36	RBM-30Ni 22-36	RBM-50Cu 22-36
24.00	SYM 20-30	RBM 20-30	RBM-56Ni 20-30	RBM-30Ni 20-30	RBM-50Cu 20-30
19.00	SYM 15-25	RBM 15-25	RBM-56Ni 15-25	RBM-30Ni 15-25	RBM-50Cu 15-25
14.00	SYM 10-20	RBM 10-20	RBM-56Ni 10-20		RBM-50Cu 10-20
11.50	SYM 8-16	RBM 8-16	RBM-56Ni 8-16		RBM-50Cu 8-16
8.00	SYM 6-12	RBM 6-12	RBM-56Ni 6-12		RBM-50Cu 6-12
6.80	SYM 5-10	RBM 5-10			
5.70	SYM 4-8	RBM 4-8			
4.80	SYM 4-6	RBM 4-6			
4.00	SYM 3-5	RBM 3-6			
3.00	SYM 2-4	RBM 2-4			
2.38	SYM 2-3				
2.00	SYM 1-3	RBM 1-3			
1.40	SYM 1-2	RBM 1-2			
1.00	SYM 0-2				
0.71	SYM 0.5-1				
0.50	SYM 0-1				
0.26	SYM 0-0.5				
0.18	SYM 0-0.25				

PROPERTIES	SYM	RBM	RBM-56Ni	RBM-30Ni	RBM-50Cu
GRADING	standard	standard	standard	standard	standard
SYNTHESIS	HPHT	HPHT	HPHT	HPHT	HPHT
CRYSTAL STRUCTURE	monocrystalline	multi-crystalline	multi-crystalline	multi-crystalline	multi-crystalline
PARTICLE SHAPE	blocky-irregular	semi-blocky	semi-blocky	semi-blocky	semi-blocky
FRACTURING MODE	macro-fracture	micro-fracture	micro-fracture	micro-fracture	micro-fracture
SURFACE STRUCTURE	angular	rough	very rough	very rough	very rough
IMPACT RESISTANCE	high	low	low	low	low
PURITY	> 98.0%	> 98.0%			
BONDING SYSTEMS	VI, MB, EP	PH, PO, VI, MB	PH, PO	PH, PO	PH, PO
DENSITY	3.52 g/cm ³	3.52 g/cm ³	5.12 g/cm ³	4.23 g/cm ³	5.04 g/cm ³